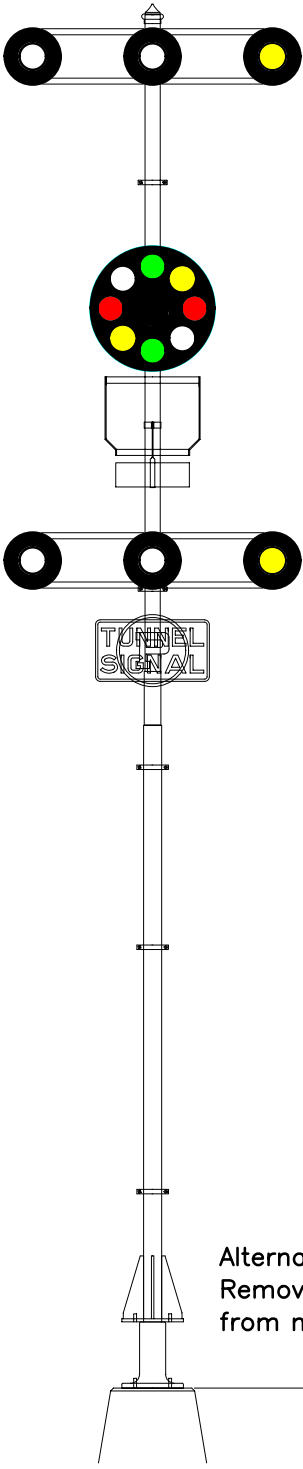
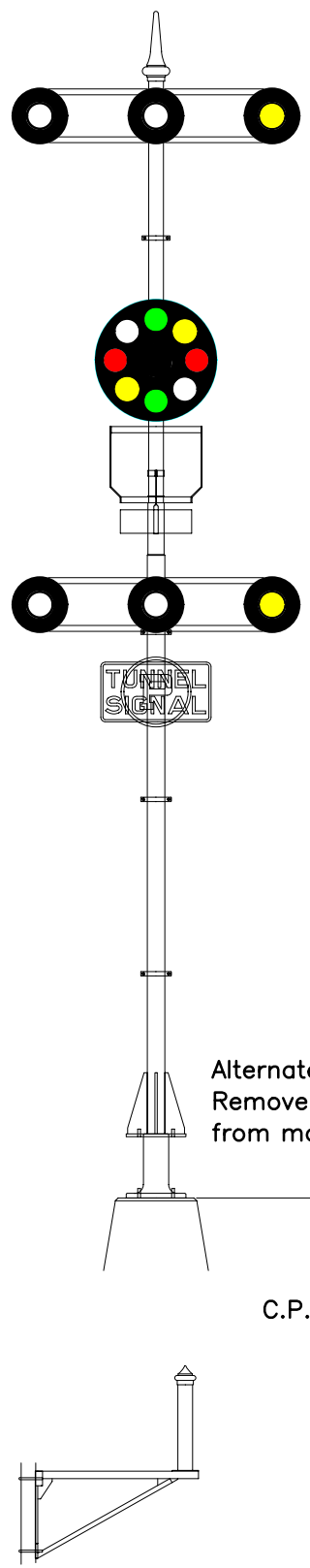
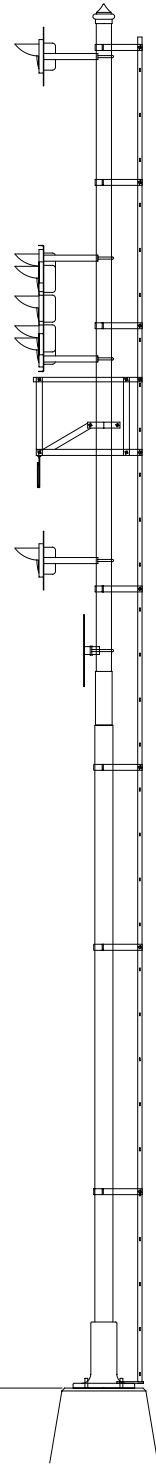


35  
30  
25  
20  
15  
10  
5  
0



Alternate Base  
Remove 2'-0"  
from mast

38 Ft Mast  
C.P.L. Assembly - 1973

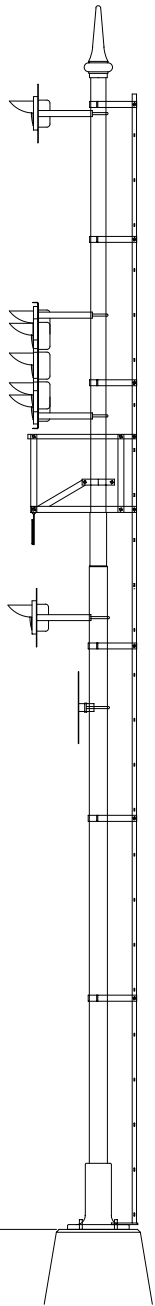


Alternate Base  
Remove 1'-10"  
from mast

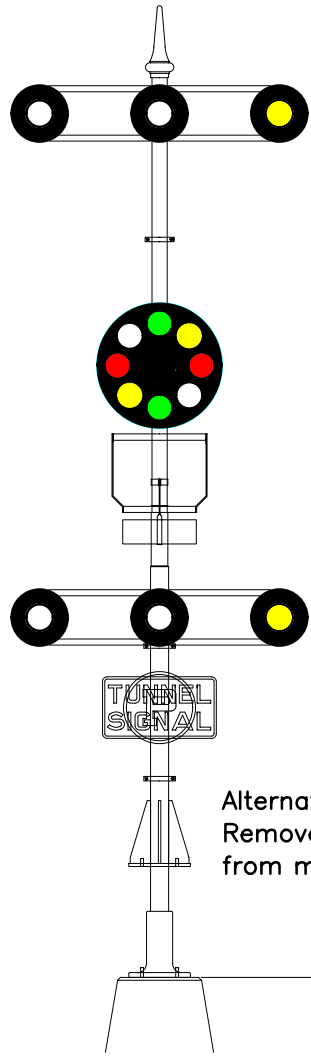
Top of  
32 Ft M  
C.P.L. Assemb

Cantilever Bracket - 1974

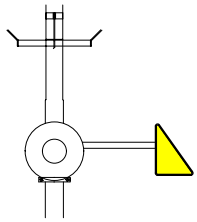
0 5 10 15 20 25 30 35



Top of Rail  
 25 Ft Mast  
 Assembly - 1971



Alternate Base  
 Remove 3'-2"  
 from mast  
 Top of Rail  
 25 Ft Mast  
 C.P.L. Assembly - 1972



Marker Sign Assembly 2858

Drawn from B&O Standard drawings,  
 manufacturer's drawings, and field  
 measurements.

BALTIMORE AND OHIO RAILROAD  
 HISTORICAL SOCIETY

**CPL Ground Mast Signals**

November 30, 2007

