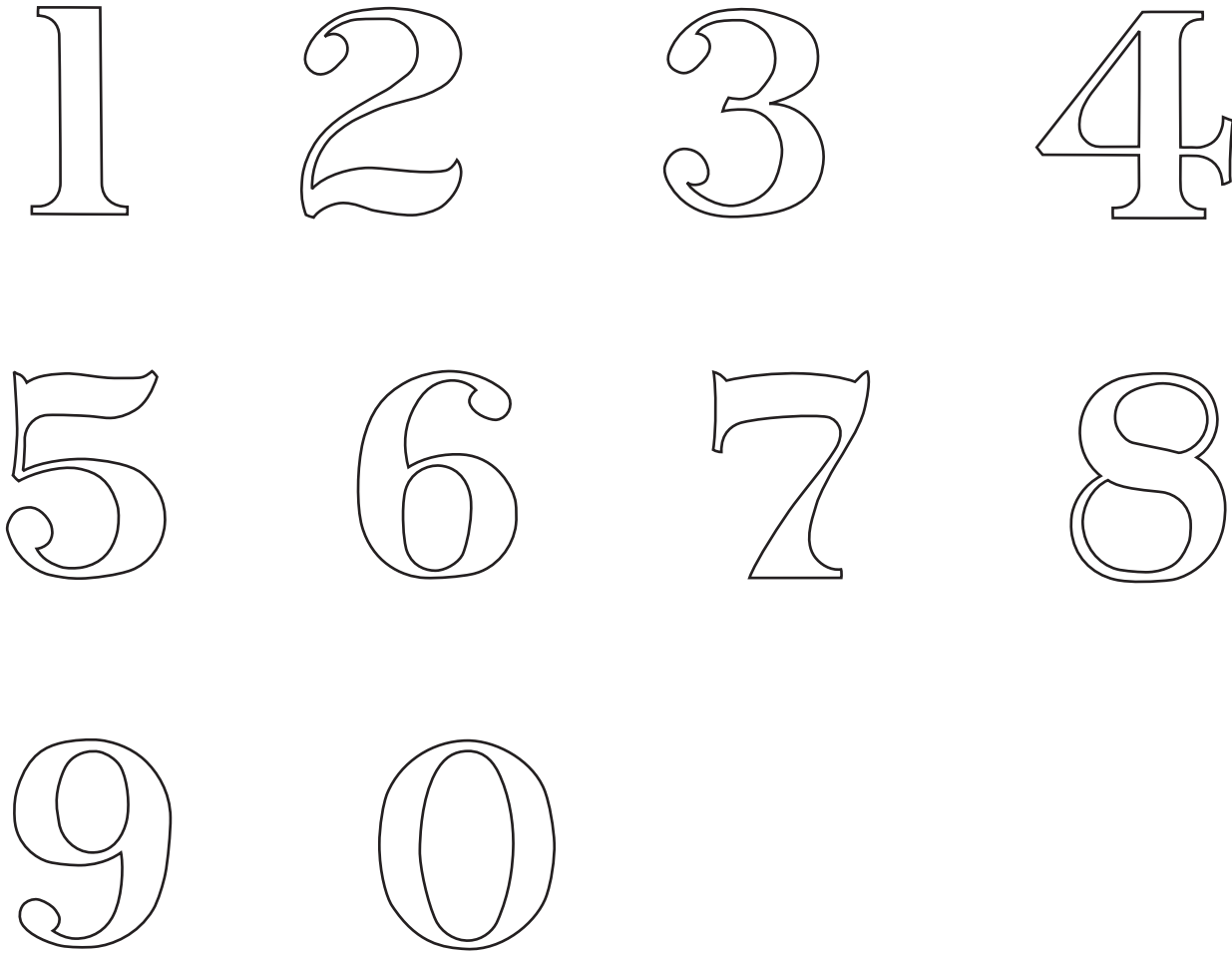




B&ORRHs
P.O. Box 24225
Baltimore, MD 21227

B&O "Railroad Roman" Numbers
 Drawn by Jack Rodriguez
 for B&ORRHs, from original blueprint
 T-16558, rev. B



WHERE USED	LINE NO.
STANDARD	1

ISSUED WITH CIR. L-317-B 11-17-1919.
 RE - "A" - "A" LETTER 12-20-1926
 SEE CIRCULAR L-317-0 7-5-1932

REVISION "B". 12-11-24. ABL. HJM
 INCLUDED PASSENGER CARS IN TITLE

SUPERSEDES BR&P TRAC. T-12131

THE BALTIMORE & OHIO R.R. CO.
 PASS. CARS & LOCOMOTIVES
 2" FIGURES, FULL SIZE

MOTIVE POWER DEP'T BALTIMORE 9-16-1903

J. Paulman
T-16558

<input checked="" type="checkbox"/>	B			
-------------------------------------	---	--	--	--

DR.	TR.	CNK.
E.S.	R.A.G.	E.S.

1 6 5 5 8