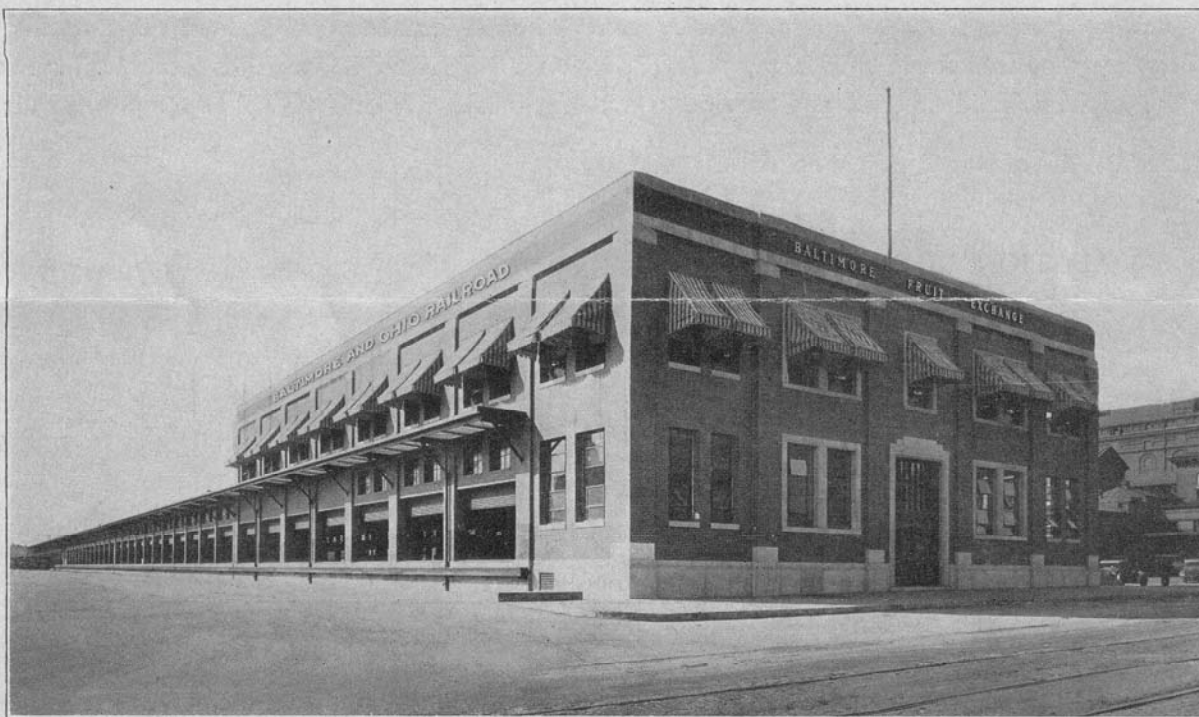


THE BALTIMORE AND OHIO RAILROAD COMPANY

*Announce the Opening October 1, 1930*

OF

THE BALTIMORE AND OHIO  
PERISHABLE PRODUCTS TERMINAL



View of Baltimore and Ohio Perishable Products Terminal



BALTIMORE, MD.

# THE BALTIMORE AND OHIO PERISHABLE PRODUCTS TERMINAL

BALTIMORE, MD.

THE BALTIMORE AND OHIO PERISHABLE PRODUCTS TERMINAL is owned by the Baltimore and Ohio Railroad Company and served only by its rails, facing on Camden Street, running through to Lee Street, occupying the property between Howard and Sharp Streets. This Terminal is equipped with all modern facilities for the efficient handling and prompt delivery of such traffic.

Effective October 1, 1930, citrus and deciduous fruit heretofore sold at Baltimore Fruit Exchange, 600 Sharp Street, will be transferred to this new AUCTION SALES BUILDING, which is located directly adjacent to the wholesale produce trade and provides convenient trucking from Terminal to the produce district.

The facilities of this Terminal consist of:

AUCTION SALES BUILDING,  
AUCTION DISPLAY PLATFORM,  
PRIVATE SALES PLATFORM,  
TEAM TRACK DELIVERY YARD.



Auction Sales and Office Building

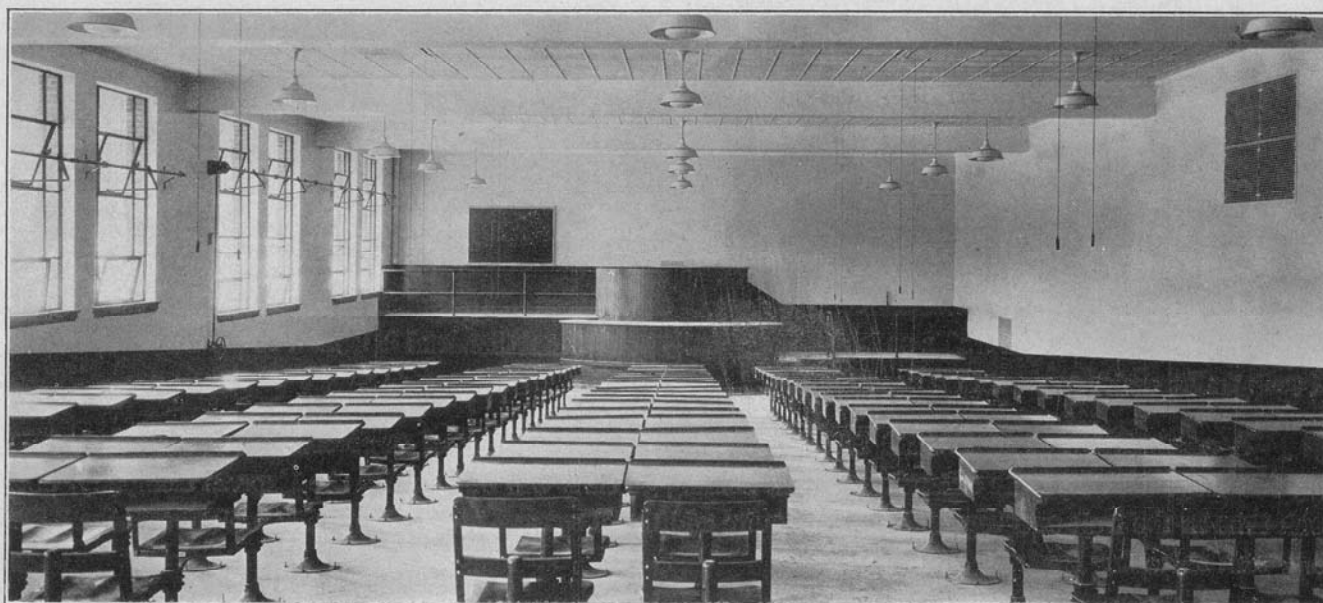




Interior View Showing Auction Display Platform

**AUCTION SALES BUILDING.** This building is of reinforced concrete, steel and brick construction, 90 feet wide and 565 feet long, with platform 8 feet wide along one side. The building has adequate floor space for the contents of 90 cars, allowing ample aisle space to provide access to any portion of each carload lot independently for inspection and delivery. Heating, thermostatically controlled, will permit handling of fruit regardless of weather conditions.

This building is served by four house tracks, each having a capacity of 12 cars, or total of 48 cars, which can be placed for unloading at one time. For making city deliveries, a concrete driveway 74 feet wide on the east side of the building, connecting with both Camden and Lee Streets, is provided. As the unloading of cars in this trade is normally completed during the night, the space occupied by tracks on the west side of the building is paved, permitting the use of both sides of the building for city deliveries during the daytime when the maximum tailboard space is required. This will provide a driveway 83 feet in width on the west side of the building.



Interior View of Auction Room

To provide OFFICE AND AUCTION ROOM space, the structure at the Camden Street end is two stories high for a length of 145 feet. On the second floor will be one large auction room with seating capacity of 200 people and space provided for the installation of additional auction room in the future of similar capacity. The auction room will be equipped with elevated rostrum for auctioneer and clerks, the floor will be sloped, and each seat will be provided with small desk for the convenience of buyers. Careful consideration has been given the feature of making the room acoustically correct. The second floor will also contain the offices of the Baltimore Fruit Exchange. Space will be provided on the first floor for the office of the Agent and Traffic Department who will represent the Railroad Company at this Terminal.



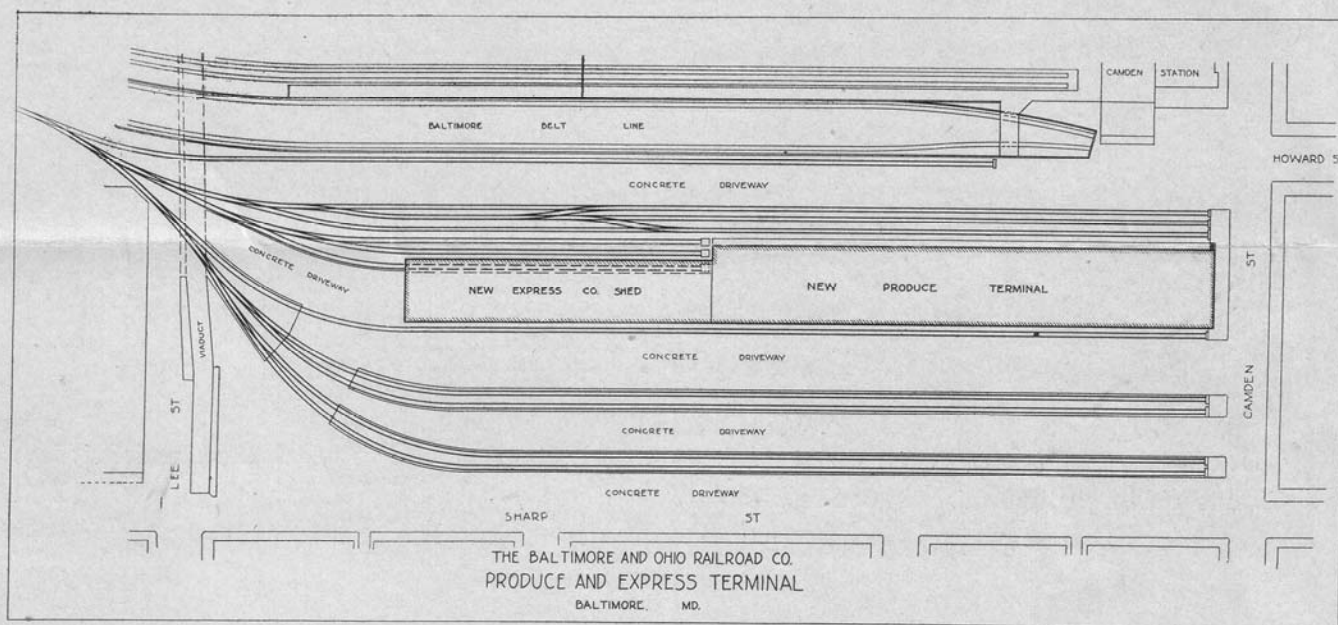
View of Private Sales Platform

**PRIVATE SALES PLATFORM.** A portion of the auction platform has been set aside for the purpose of handling such perishable traffic as is not customarily sold at auction, and is heated to permit the handling of such traffic under any weather conditions.

A continuation of PRIVATE SALES PLATFORM, consisting of same construction, 70 feet wide, 343 feet long, with separate unloading tracks, holding 30 cars, will be used by the Express Company, until such time as the fruit and vegetable trade require additional space. This will provide a platform of 908 feet long with unloading track for 78 cars.



**TEAM DELIVERY YARD.** Four tracks with wide paved driveway are provided for the direct delivery of carload freight, with ingress and egress on Camden, Sharp, Lee and Howard Streets, with a total capacity of 207 cars.



**View of Team Delivery Yard Track**

# **THE BALTIMORE AND OHIO PERISHABLE PRODUCTS TERMINAL**

**BALTIMORE, MD.**

---

## **RECONSIGNMENT**

Reconsignment privileges covering shipments of fruits and vegetables are in effect on traffic handled by the Baltimore and Ohio Railroad Company.

Our representatives will gladly furnish full information upon request.

---

## **STORAGE IN TRANSIT**

**ON**

## **APPLES, PEARS AND GRAPES**

Detailed information as to origin and destination territories from and to which the transit privilege is applicable will be gladly furnished upon request.

---

**C. F. FARMER,**

General Freight Agent in Charge Perishable Products,  
Baltimore, Md.

**SAMUEL HOUSE,**

Freight Traffic Manager,  
Baltimore, Md.

**H. G. SETTLE,**

General Freight Agent,  
Baltimore, Md.

**J. L. HAYES,**

Assistant General Freight Agent,  
Baltimore, Md.

**E. S. KING,**

District Freight Agent,  
Baltimore, Md.

Baltimore and Ohio Representatives listed below will gladly cooperate with you in the handling of your business originating in their respective territories.

A. G. MARRINER,

District Freight Representative,  
731, 733 and 737 Monadnock Building,  
San Francisco, Calif.

C. W. DORFLINGER,

District Freight and Passenger Representative,  
504-506 Central Building,  
Los Angeles, Calif.

FRANK L. MAHER,

District Freight and Passenger Representative,  
336-7 Henry Building,  
Seattle, Wash.

G. W. M. GEMMILL,

District Freight Representative,  
606 Atlantic National Bank Building,  
Jacksonville, Fla.

A. A. IRWIN,

District Freight Representative,  
318-19 Healey Building,  
Atlanta, Ga.

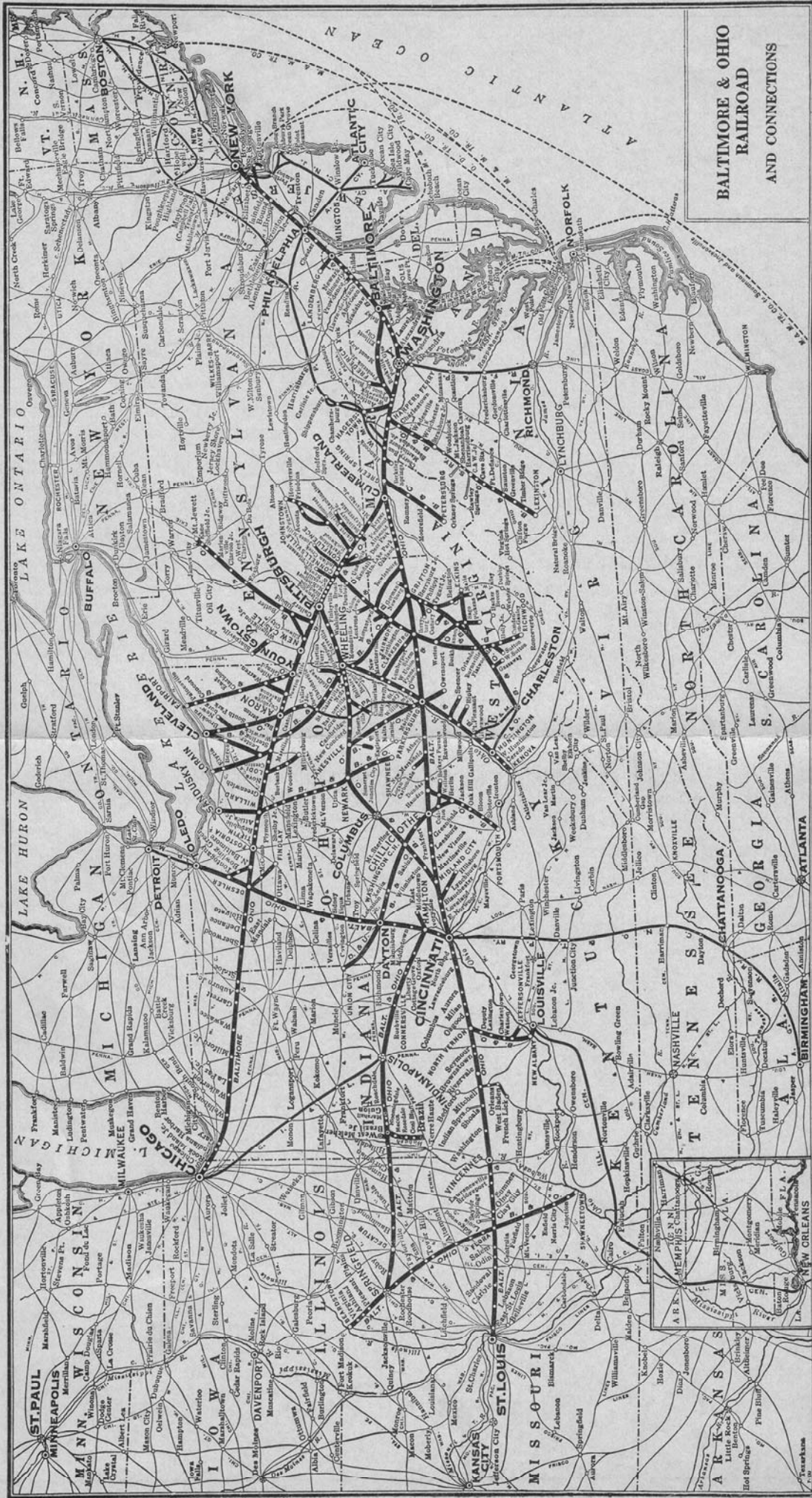
E. M. PHILLIPS,

District Freight Representative,  
Room 1107, Johnston Building,  
Charlotte, N. C.

J. ROBERT PLUMMER,

District Freight and Passenger Representative,  
501 Heard Building,  
Phoenix, Ariz.





**BALTIMORE & OHIO  
RAILROAD  
AND CONNECTIONS**